

Athens Alley Phase 2

Contract No. 21-SW2

Situate In
Dormont Borough
Allegheny County, Pennsylvania

Prepared For

Borough of Dormont Stormwater Authority

1444 Hillsdale Avenue
 Pittsburgh, PA 15216

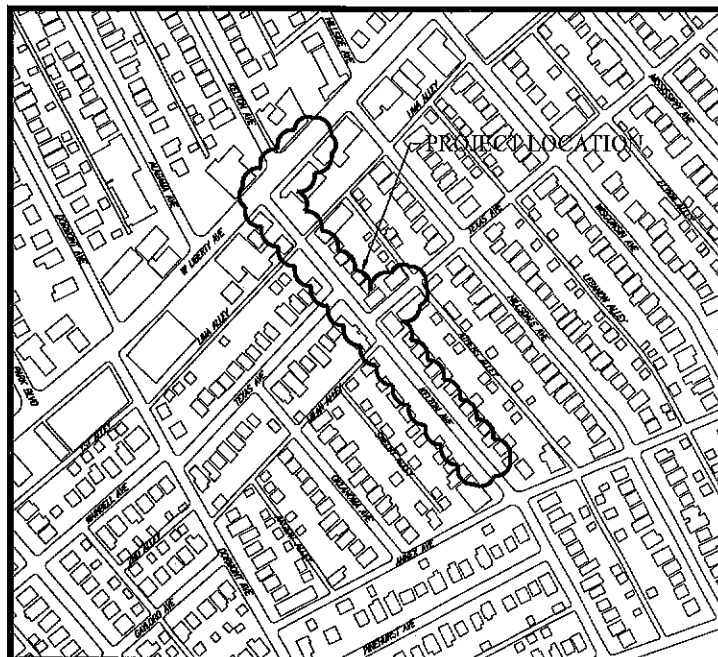
ONE CALL RESPONDENTS

Information as to the location and type of underground utilities and structures shown are approximate. Contractor(s) shall verify all such information in the field. Prior to any excavation, the Contractor(s) shall notify the Pennsylvania One Call System by calling 811. Locations of the utilities shown on the drawings or within the construction area are based on information provided through the Pennsylvania One Call System, Inc, Serial No. 20210321233. The respondents to the One Call notification were:

PA One Call Contacts			
Utility	Company	Address	Tel. No./ Email
STORM SEWER	BOROUGH OF DORMONT STORMWATER AUTHORITY CONTACT: DEBORAH GRASS	1444 HILLSDALE AVENUE PITTSBURGH, PA 15216	manager@dormontstormwater.org
TELEPHONE	VERIZON OF PENNSYLVANIA, INC. CONTACT: DEBORAH BARUM	1026 HAY STREET PITTSBURGH, PA 15221	deborah.d.della@verizon.com
GAS	COLUMBIA GAS OF PENNSYLVANIA CONTACT: LISA COLLINS	1600 DUBLIN ROAD COLUMBUS, OH 43215	ldugan@nsource.com
GAS	PEOPLES GAS COMPANY LLC CONTACT: MICHAEL DENNY	375 NORTH SHORE DRIVE PITTSBURGH, PA 15212	michael.denny@peoples-gas.com
ELECTRIC	DUQUESNE LIGHT COMPANY CONTACT: KYLIE PARSON	2645 NEW BEAVER AVENUE PITTSBURGH, PA 15233	kparson@duqlight.com
WATER	PENNSYLVANIA AMERICAN WATER CONTACT: LUCIAN CAPPETTA	500 NOBLESTOWN ROAD CARNEGIE, PA 15106	lucian.cappetta@amwater.com
SANITARY SEWER	BOROUGH OF DORMONT CONTACT: WAYNE MCVICAR	1444 HILLSDALE AVENUE PITTSBURGH, PA 15216	wmccicar@boro.dormont.pa.us

ALL EXISTING SUBSURFACE UTILITY INFORMATION PRESENTED ON THE CONTRACT DRAWINGS IS CHARACTERIZED AS UTILITY QUALITY LEVEL C OR D PER "CI/ASCE 38-02 - STANDARD GUIDELINES FOR THE COLLECTION AND DEPICTION OF EXISTING SUBSURFACE UTILITY DATA" UNLESS SPECIFICALLY NOTED OTHERWISE.

February 2021

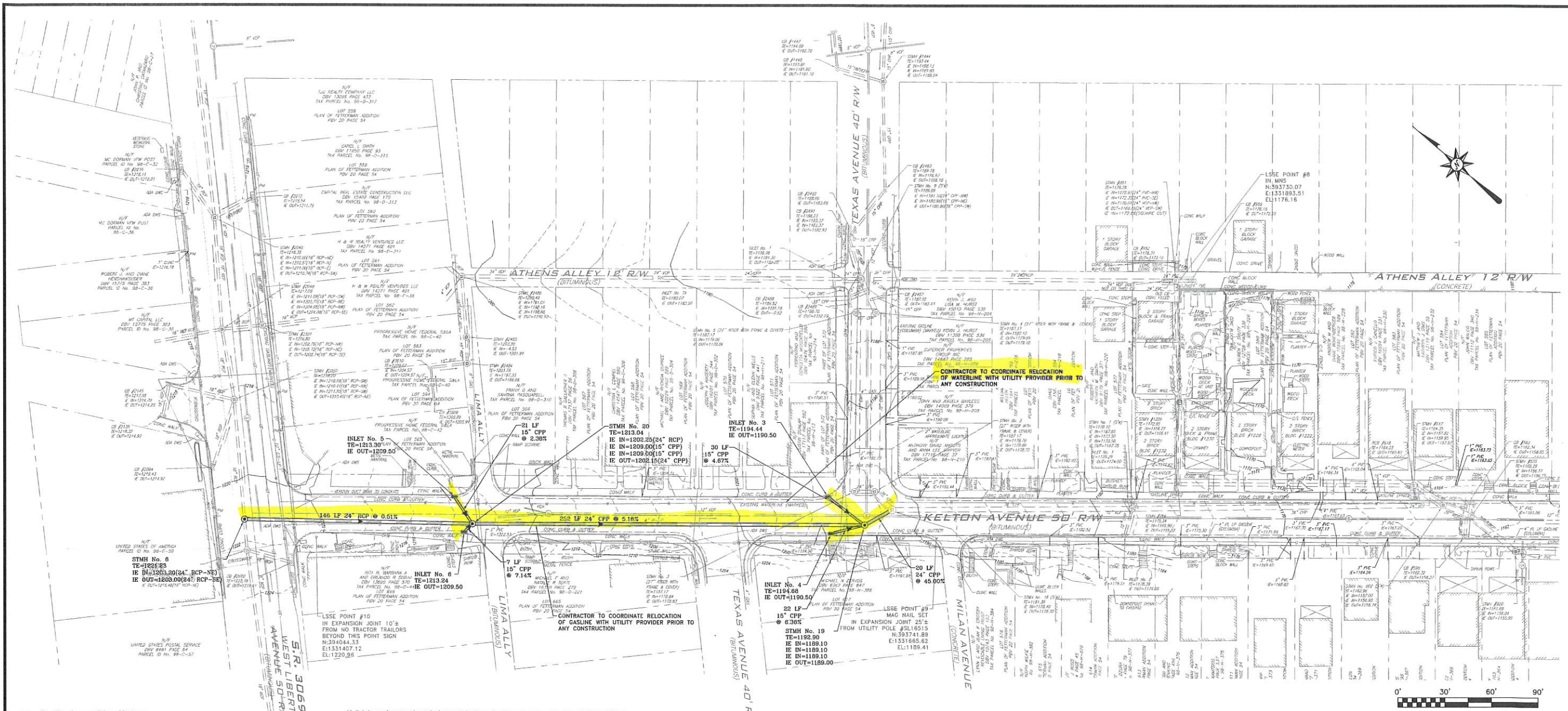


Location Map
 N. T. S.

Sheet Index		
Sheet No.	Sheet Description	Drawing No.
---	Title Sheet	---
1 OF 6	Existing Conditions	512-014-1
2 OF 6	Construction Plan	512-014-2
3 OF 6	Storm Sewer Profile	512-014-3
4 OF 6	Restoration Plan	512-014-4
5 OF 6	Standard Details	512-014-5
6 OF 6	Standard Details	512-014-6
E&S PLANS		
ES1 OF ES2	Erosion & Sedimentation Control Plan	512-014-ES1
ES2 OF ES2	Erosion & Sedimentation Control Details	512-014-ES2
HOP PLANS		
HOP 1 OF HOP2	HOP PLAN	512-014-HOP 1
HOP 2 OF HOP2	TRAFFIC CONTROL DETAILS	512-014-HOP 2

CALL BEFORE YOU DIG!
 PENNSYLVANIA LAW REQUIRES
 3 WORKING DAYS NOTICE FOR
 CONSTRUCTION PHASE AND 10 WORKING
 DAYS IN DESIGN STAGE - STOP CALL
 Pennsylvania One Call System, Inc.
CALL 811
 Serial #20210321233

Lennon, Smith, Souleret
 Engineering, Inc.
 946 4th Avenue
 Coraopolis, Pennsylvania 15108
 Phone: 412-264-4400
 Fax: 412-264-1200
 email: info@lsas.com



Grading/Drainage Plan Notes:

1. Notify the Pennsylvania One Call System at 811 a minimum of (5) days prior to any demolition, excavation, or construction. All existing subsurface utility information presented on the contract drawings is characterized as utility quality level C or D per "CLASSICE 38-02 - Standard Guidelines for the Collection and Depiction of Existing Subsurface Utility Data" unless specifically noted otherwise. The locations of all existing utilities shown on this plan have been determined from the best information available and are given for the convenience of the Contractor. All existing sewers, piping and utilities shown are not to be interpreted as the exact location, or as the only obstructions that may occur on the site. The Engineer assumes no responsibility for their accuracy. Prior to the start of any demolition, excavation, or construction activity, notify the utility companies for field locations of existing utilities. Verify existing conditions, locate all utilities by digging test pits, and proceed with caution around any anticipated features. Notify the Owner immediately of any conflicts with existing utilities. Immediately and completely repair existing utilities that are damaged during demolition, excavation, or construction at no additional cost to the Owner.
2. All work and materials to comply with all specifications provided; local, county, state, and federal regulations and codes; and O.S.H.A. Standards.
3. Implement and maintain a work zone traffic control plan in accordance with PennDOT publication 213 ("Work Zone Traffic Control") for work in or adjacent to vehicular traffic areas.
4. Designate and maintain on-site a trained competent person for all excavation work who shall be in call 24-hours-per-day-7-days-per-week in case of emergency. Provide 24-hour contact information for the trained competent person prior to any work.
5. All materials furnished and work completed shall be in strict accordance with PennDOT Form 408 and PennDOT Standard Details (Pub. 72) as amended unless otherwise specified.
6. Perform work in accordance with all applicable governing codes, rules, standards, and regulations.
7. Furnish, install, and maintain all erosion and sediment control facilities in accordance with County Conservation District and Pennsylvania Department of Environmental Protection standards and requirements. Install a rock construction entrance and keep surfaced streets in a clean condition at all times during construction. Adhere to all terms & conditions as outlined in Chapter 102 of the PA Code for stormwater discharge associated with construction activities. Maintain a copy of the Erosion and Sedimentation Control Plan on site.
8. Inspect existing drainage structures to be inspected, repaired, and to remove all silt and debris from existing structures.
9. All excavation is considered unclassified. The Contractor is responsible for all means, methods, and materials of construction to complete the work. The Contractor is responsible for the off-site disposal of any and all excess or unsuitable material unable to be placed on site and for importing any borrow material necessary to complete the work.

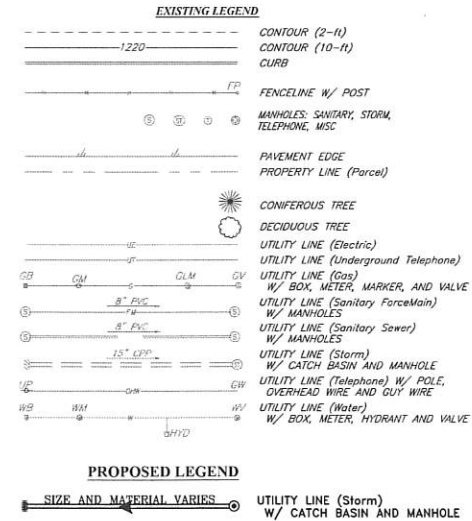
10. Existing grade contour intervals shown at 2 foot intervals. Proposed grade contour intervals shown at 2 foot intervals.
11. Furnish and install smooth interior corrugated polyethylene pipe (CPP) storm sewer piping as manufactured by ADS or Hanco or approved equal, unless otherwise indicated.
12. Furnish and install PennDOT type "M" inlets with structural steel frames within paved areas and PennDOT type "C" inlets along curb lines. Furnish and install standard or modified inlet base units as necessary to accommodate pipe sizes and angle of pipe entry. For every inlet in paved areas, furnish and install 10 linear feet of 4-inch perforated Schedule 40 PVC radial underdrain in each direction that is under surfaces to be paved.
13. Install storm sewer manholes in paved areas with top elevations flush with pavement. Install manholes in unpaved areas with top elevations 6" above finish grade, unless otherwise noted. Install traffic bearing rings & covers on all storm sewer manholes. Covers shall be labeled "storm sewer".
14. Adjust proposed pavement as necessary to assure a smooth fit and continuous grade to existing pavement. Adjust top elevations of existing utility structures and other existing at-grade structures to remain as necessary to proposed finished grade and pavement elevations.
15. Adjust grades as necessary to assure positive drainage away from buildings and toward existing or proposed storm sewer structures for all paved and unpaved areas. Adjust grades and inlet top elevations as necessary to provide positive drainage.
16. Transition all temporary paving or grade changes in vehicular or pedestrian travel ways to provide a smooth travel way and avoid trip hazards.
17. Collect groundwater seepage, if encountered during excavation, via underdrains and discharge to the storm sewer system. Areas of drainage encountered shall be designated on as-built plans.
18. Parge the interior surface of all inlet structures with Portland cement grout. Grout annular space around storm pipes where entering structures to assure water-tight connection at structure. Grout pipes on exterior of structures prior to backfill and on the interior of structures after backfill and connection are complete.
19. Contractor to support all above ground and exposed subsurface utilities during construction activities. This work is incidental to storm sewer installation.
20. Contractor to note garbage pickup is scheduled for Tuesdays within the Borough. Contractor to provide access for garbage pickup every week.
21. Test pit all utilities, laterals, service lines prior to construction of any storm sewers and provide cut sheet survey with elevations for each lateral or mainline.

CALL BEFORE YOU DIG!

PENNSYLVANIA LAW REQUIRES 3 WORKING DAYS NOTICE FOR CONSTRUCTION PHASE AND 10 WORKING DAYS IN DESIGN STAGE - STOP CALL Pennsylvania One Call System, Inc



CALL 811 SERIAL NO. 20210321233



No.	Date	Description	By	No.	Date	Description	By
1							

Lennon, Smith, Souleret
Engineering, Inc.
846 4th Avenue
Coraopolis, Pennsylvania 15108
Phone: 412-264-4400
Fax: 412-264-1200
email: info@lsse.com

Filename: 51207GP Ph2.dwg
Date: February 2021
Borough of Dormont Stormwater Authority
1444 Hillside Avenue
Pittsburgh, PA 15216

Athens Alley Phase 2
Contract No. 21-SW2
Dormont Borough, Allegheny County, Pennsylvania

Sheet Title: Construction Plan
Drawing No.: 512-014-2
Sheet No.: 2 of 6

P:\Projects\512-014-2\Athens Alley Phase 2\3.13.2021\DWG\Phase 2\3.13.2021\2301.dwg
 User: jshaw
 Printed: 2/18/2021 2:50 PM