

**C-9**  
 SHEET NUMBER  
 DATE: SEP 17, 2012  
 DRAWN BY: RAY/MSJ  
 SCALE: 1" = 10'

**BOROUGH OF DORMONT**  
 1444 HILLSIDE AVE. SUITE #119  
 PITTSBURGH, PA 15216

**LANDSCAPE PLAN**  
**DORMONT BOROUGH PUBLIC PARKING**

ALLEGANY COUNTY, PA  
**FAHRINGER, MCGARTY, GREY, INC.**  
 LANDSCAPE ARCHITECTS AND ENGINEERS  
 MONROEVILLE, PA

REVISIONS  
 1. OCT. 31, 2012

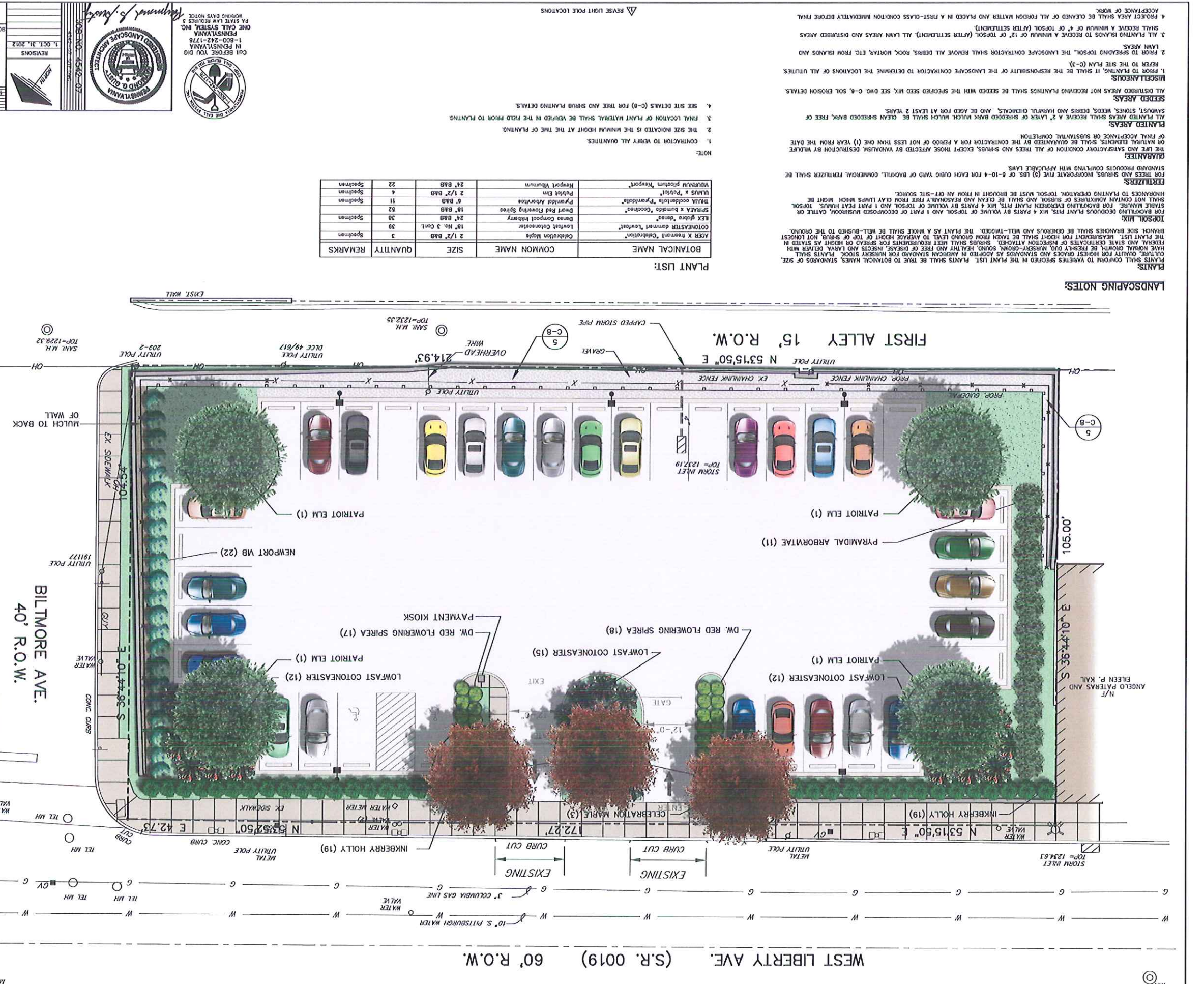
PA STATE LANDSCAPE ARCHITECT  
**Matthew J. Fahring**  
 1-800-242-1776  
 1-800-242-1776  
 PENNSYLVANIA  
 ONE CALL SYSTEM, INC.  
 PA STATE LAW ENFORCEMENT  
 CALL BEFORE YOU DIG  
 1-800-387-3377

**GRAPHIC SCALE**  
 1 inch = 10 ft.

**LEGEND**

- PROPOSED TREE
- PROPOSED SHRUB
- LAWN
- GRAVEL EDGING

**LANDSCAPE CALCULATIONS:**  
 PARKING (SEE LANDSCAPE) = 617 SF (REQUIRED)  
 (25% LANDSCAPE) = 5,700 SF (PROVIDED)  
 36 SPACES = 4 TREES (REQUIRED)  
 1 TREE/10 SPACES  
 7 TREES (PROVIDED)



**PLANT LIST:**

| BOTANICAL NAME                  | COMMON NAME                | SIZE             | QUANTITY | REMARKS  |
|---------------------------------|----------------------------|------------------|----------|----------|
| ACEX X Brevortia 'Cobaltstar'   | Cobaltstar Magnolia        | 2 1/2' B&B       | 3        | Specimen |
| COLOMBASTER 'Lentor'            | Lowfast Cotoneaster        | 18" H.S. 3 CONT. | 39       | Specimen |
| LEK 'Globe' 'Spiraea'           | Dwarf Cornus Spirea        | 24" B&B          | 38       | Specimen |
| SPRUEK X Brevortia 'Cobaltstar' | Dwarf Red Flowering Spirea | 18" B&B          | 52       | Specimen |
| THIA 'Coccoloba' 'Pyramidalis'  | Pyramidal Arborvitae       | 8' B&B           | 11       | Specimen |
| THIA 'Coccoloba' 'Pyramidalis'  | Pyramidal Arborvitae       | 2 1/2' B&B       | 4        | Specimen |
| THIA 'Coccoloba' 'Pyramidalis'  | Pyramidal Arborvitae       | 24" B&B          | 22       | Specimen |
| HEMPT 'Vernum' 'Nepot'          | Hempstead Yucca            | 24" B&B          | 22       | Specimen |

**LANDSCAPING NOTES:**

PLANTS SHALL CONFORM TO VARIETIES LISTED IN THE PLANT LIST. PLANTS SHALL BE TRUE TO BOTANICAL NAMES, STANDARDS OF SIZE, PLANT QUALITY FOR HIGHEST GRADES AND STANDARDS AS ADOPTED IN AMERICAN STANDARDS FOR NURSERY STOCK. PLANTS SHALL HAVE NORMAL GROWTH, BE PEST-FREE, SOUND, HEALTHY AND FREE OF DISEASE, INSECTS AND LARVA. DELIVER WITH TRUNK AND BRANCHES PROTECTED FROM DAMAGE. BRANCHES SHALL BE CLEAN AND WELL-TIMBERED. THE PLANT AS A WHOLE SHALL BE WELL-BUSHED TO THE GROUND.

**TORNSOIL MIX:** FOR BACKFILLING EXISTING PLANT PITS, MIX 4 PARTS BY VOLUME OF TORNSOIL AND 1 PART OF DECOMPOSED BUSHWOOD, CATTLE OR STABLE MANURE. FOR BACKFILLING EXISTING PLANT PITS, MIX 4 PARTS BY VOLUME OF TORNSOIL AND 1 PART FEAT HAYUS. TORNSOIL SHALL NOT CONTAIN AMMONIUMS OF EXCESSIVE OR EXCESSIVE NITROGEN. TORNSOIL MUST BE BROUGHT IN FROM AN OFF-SITE SOURCE.

**FERTILIZERS:** FOR TREES AND SHRUBS, CONCENTRATE FERT (5) LBS. OF 8-10-4 FOR EACH CUBIC YARD OF BACKFILL. COMMERCIAL FERTILIZER SHALL BE APPLIED TO PLANTING OPERATIONS. TORNSOIL MUST BE BROUGHT IN FROM AN OFF-SITE SOURCE.

**GUARANTEES:** THE LIFE AND SATISFACTION OF ALL TREES AND SHRUBS, EXCEPT THOSE AFFECTED BY WINDSTORM, RESTRICTION BY NATURE OR FINAL ACCEPTANCE OR SUSTAINMENT COMPLETION. THE LIFE AND SATISFACTION OF ALL TREES AND SHRUBS SHALL BE GUARANTEED BY THE CONTRACTOR FOR A PERIOD OF NOT LESS THAN ONE (1) YEAR FROM THE DATE OF FINAL ACCEPTANCE OR SUSTAINMENT COMPLETION.

**PLANTED AREAS:** ALL PLANTED AREAS SHALL RECEIVE A 2" LAYER OF SHREDDED BARK MULCH. MULCH SHALL BE CLEAN SHREDDED BARK, FREE OF SANDS, STONES, WEEDS, DEBRIS AND HARMFUL CHEMICALS. AND BE APPLIED FOR AT LEAST 2 YEARS.

**SEEDING AREAS:** ALL DISTURBED AREAS NOT RECEIVING PLANTINGS SHALL BE SEEDING WITH THE SPECIFIED SEED MIX, SEE CMO-6, SOIL EROSION DETAILS.

**MISCELLANEOUS:** 1. PRIOR TO PLANTING, IT SHALL BE THE RESPONSIBILITY OF THE LANDSCAPE CONTRACTOR TO DETERMINE THE LOCATIONS OF ALL UTILITIES. REFER TO THE SITE PLAN (C-3). 2. PRIOR TO SPREADING TORNSOIL, THE LANDSCAPE CONTRACTOR SHALL REMOVE ALL DEBRIS, ROCK, MORTAR, ETC. FROM ISLANDS AND ISLANDS. 3. ALL PLANTING ISLANDS TO RECEIVE A MINIMUM OF 12" OF TORNSOIL (AFTER SETTLEMENT). ALL LAWN AREAS AND DISTURBED AREAS SHALL RECEIVE A MINIMUM OF 4" OF TORNSOIL (AFTER SETTLEMENT).

**ACCEPTANCE OF WORK:** 4. PROJECT AREA SHALL BE CLEANED OF ALL FOREIGN MATTER AND PLACED IN A FIRST-CLASS CONDITION IMMEDIATELY BEFORE FINAL ACCEPTANCE OF WORK.